



 **MODULAR**
LIGHTING —
INSTRUMENTS

DRUPL



DRUPL UPLIGHT
OFFICE, ANTWERP (BE)



DRUPL

Inspired by the effects of sunlight through droplets of water, Modular's Drupl portfolio is named after the Dutch word for 'drop'. New advances in luminary technology make Drupl the perfect continuous lighting solution for offices, where high-quality light and anti-glare qualities are key to comfort and productivity.

Cutting-edge optical lighting

Drupl combines the benefits of unique optical lenses over highly-performant LEDs producing light at a quality of CRI90 or greater with elegant design that will transform any professional space. Available in a wide range of colours and shapes. Drupl's flange guarantees an attractive, streamlined and advanced recessed install.

2700K colour option added

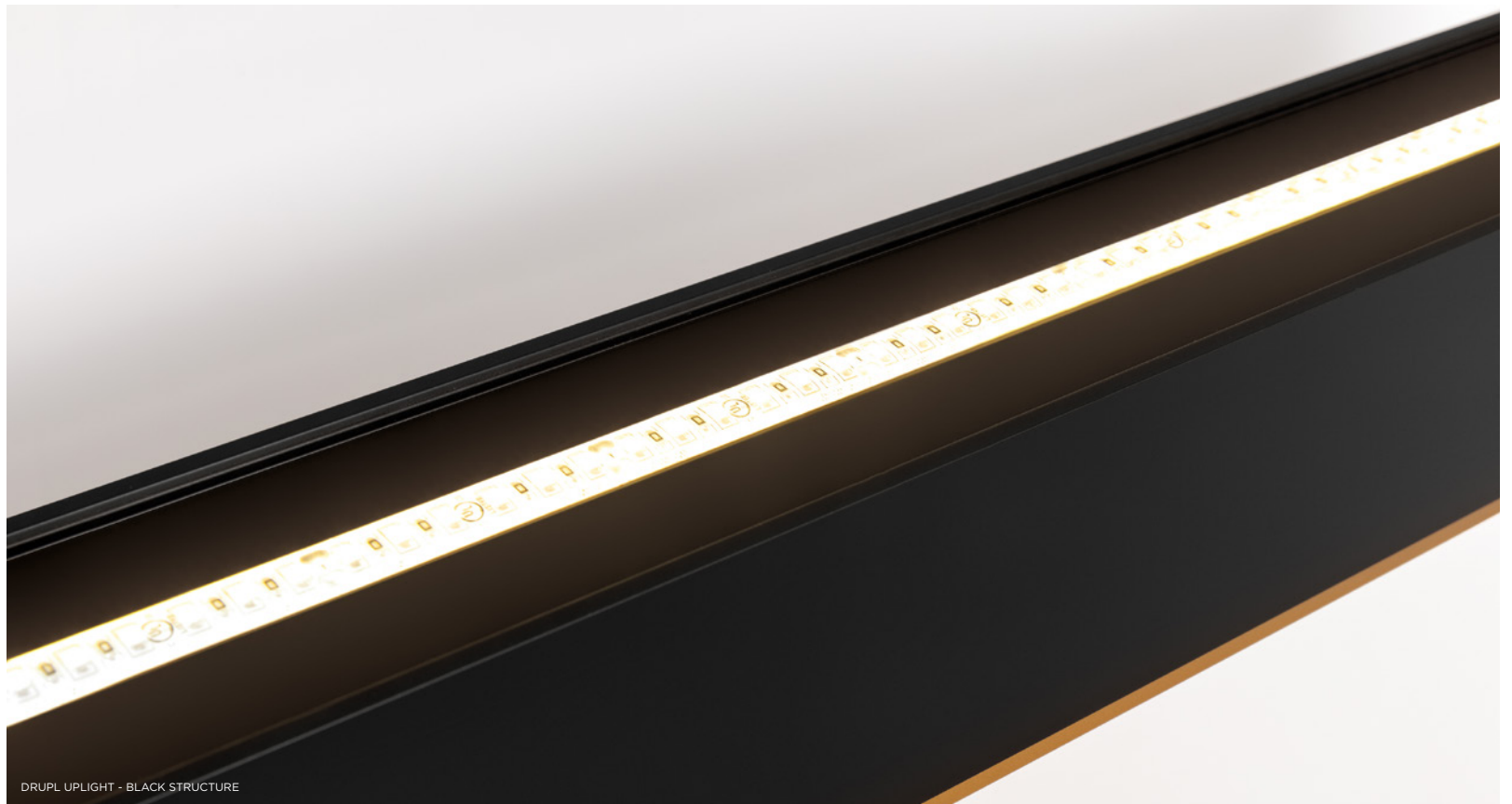
So that you can bring the most beautiful, natural and highest quality light into your space, Modular has upgraded the technology of many of our prominent linear lighting solutions. Fortimo LED Lines now come in 3 colour temperatures (2700K, 3000K and 4000K), and each colour option comes with a standard light quality of CRI90+.

Illumination that thinks for you

Using a DALI-based lighting control system, Modular now offers smart profile lighting solutions that incorporate 3 types of miniature sensors: motion, daylight and infrared. By integrating sensors, our profiles are programmed to regulate light levels based on ambient light, time of day and/or presence in rooms. The result is maximum comfort, and energy savings of up to 75%.

versions	<i>Drupl 70 (surface, suspended) Drupl 70 flange (recessed) Drupl upright</i>
finishing profiles	<i>curved, sharp, straight</i>
colours	<i>white struc black struc anodised matt black anodised gold anodised alu</i>
output*	<i>910lm – 9W (per LED line)</i>
cct	<i>2700K, 3000K, 4000K</i>
cri	<i>90+</i>
optics	<i>lens technology 50°, 80°</i>
dimming	<i>1-10V, pushdim, dali (GI)</i>
-	
more info?	<i>supermodular.com/en/drupl-70-curved supermodular.com/en/drupl-70-sharp supermodular.com/en/drupl-70-straight configurator.supermodular.com</i>

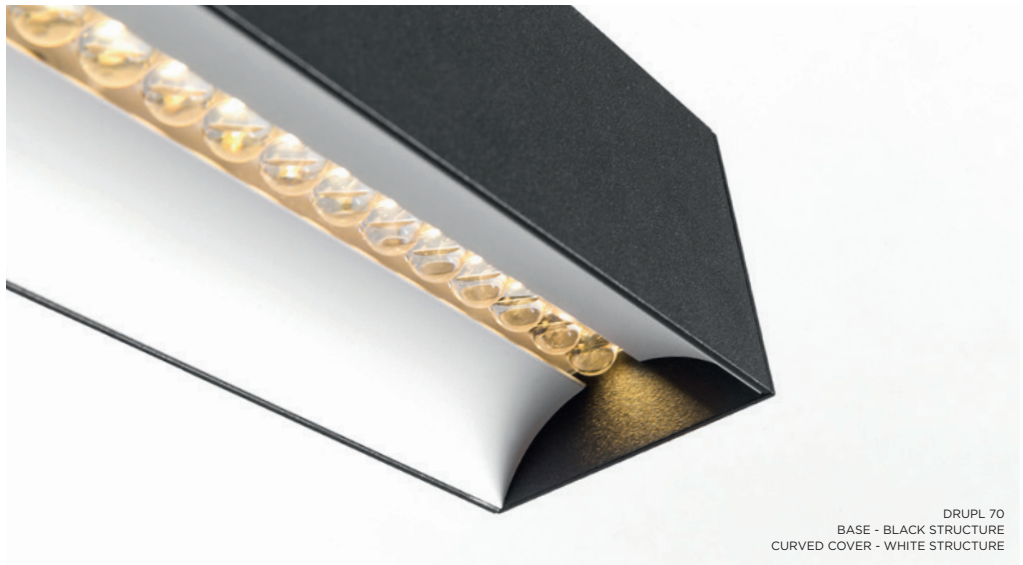
*output for white struc, 3000K, lens 50°



DRUPL UPLIGHT - BLACK STRUCTURE



DRUPL UPLIGHT - WHITE STRUCTURE



DRUPL 70
BASE - BLACK STRUCTURE
CURVED COVER - WHITE STRUCTURE



DRUPL 70 FLANGE
STRAIGHT COVER - BLACK STRUCTURE



DRUPL 70
BASE - MATT BLACK ANO
SHARP COVER - MATT BLACK ANO



DRUPL, SMART LOTIS WITH SMART SURFACE TUBED
URBAN INDUSTRIAL, AMSTERDAM (NL)
HEYLIGERS DESIGN + PROJECTS



DRUPL, UNITED
GBL, KORTRIJK (BE)
GBL STUDIO







DRUPL
MOVE CAR SHOP, AMSTERDAM (NL)
QUA ASSOCIATES



DRUPL
MOLLIE PAYMENTS, AMSTERDAM (NL)
HEYLIGERS DESIGN + PROJECTS